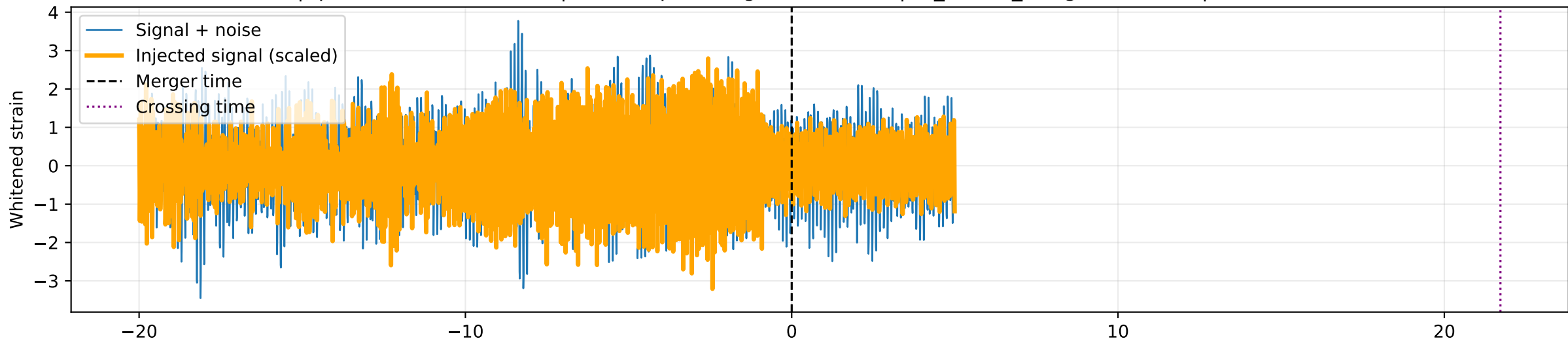
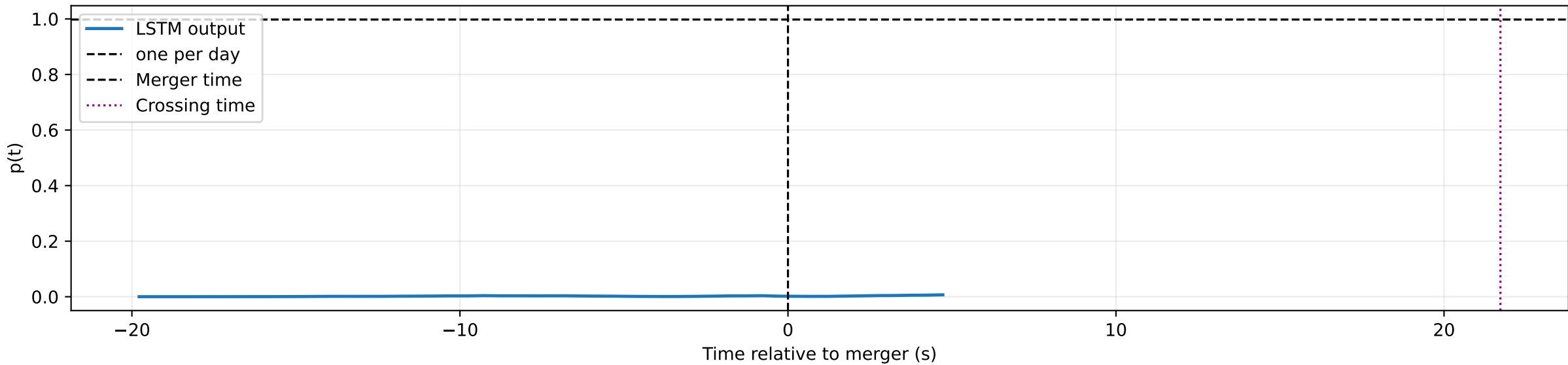


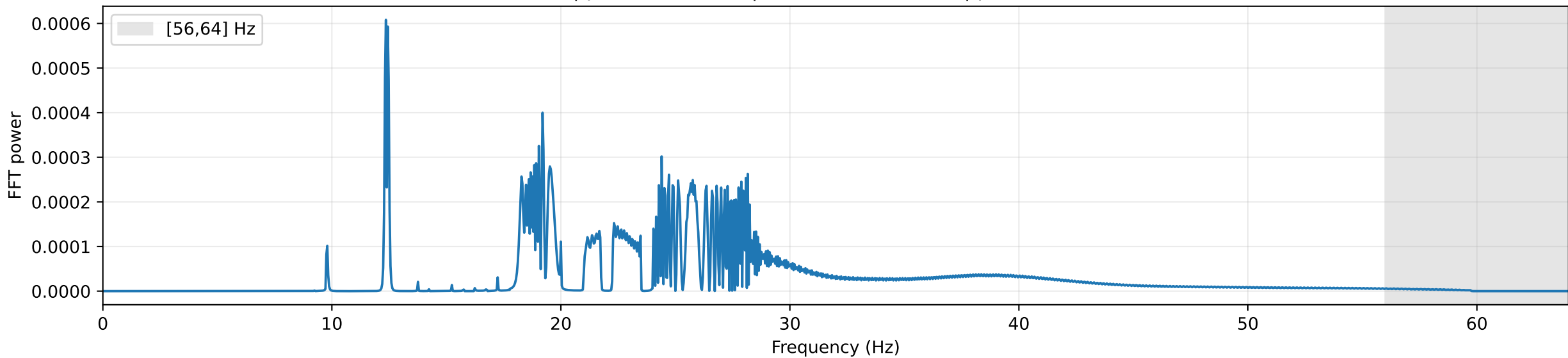
NSBH | quoted total SNR=4.55 | in-band pre-merger SNR=0.01 | dt\_before\_merger=-21.72s | GPS=1264574464



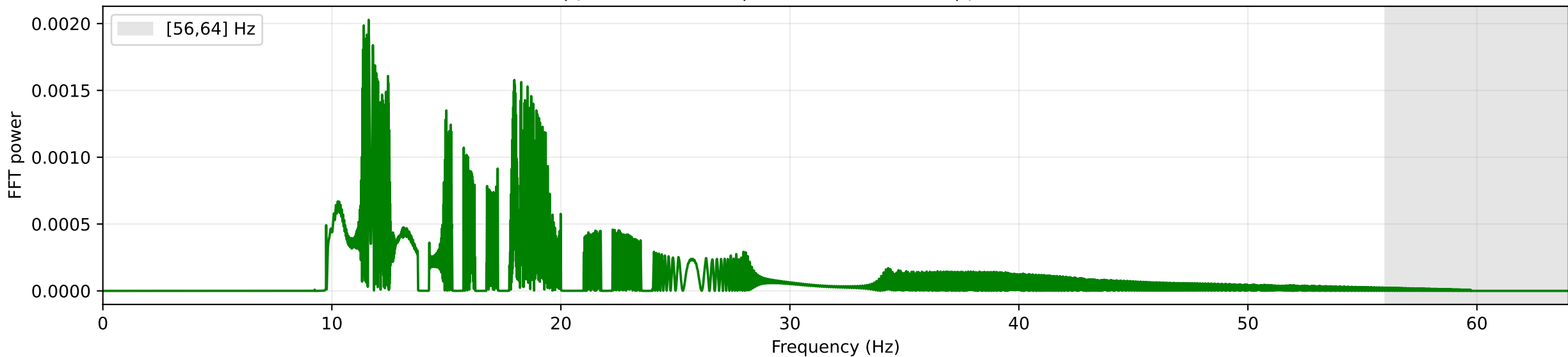
LSTM behaviour relative to merger time



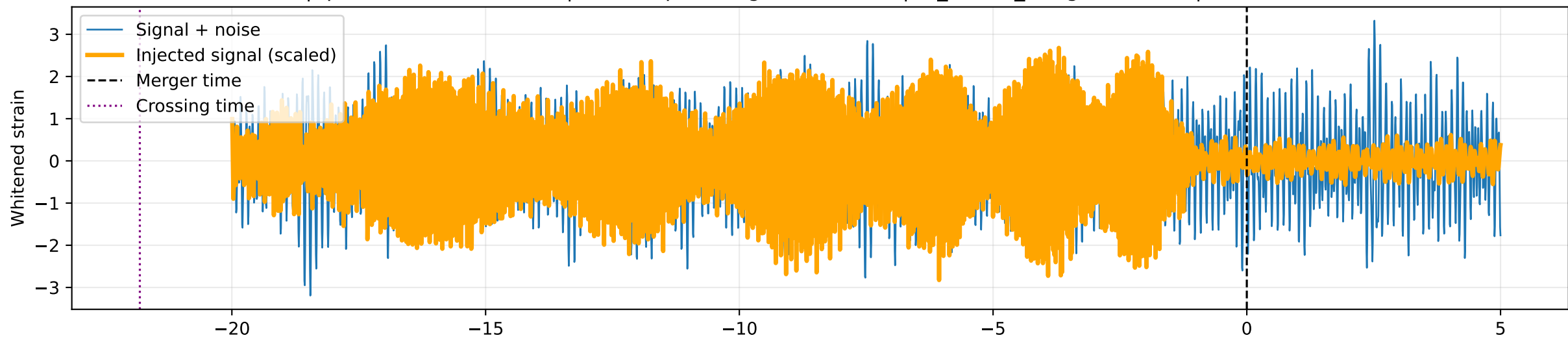
SHORT FFT | peak=12.36 Hz | centroid=27.40 Hz | power[56,64]=0.00772



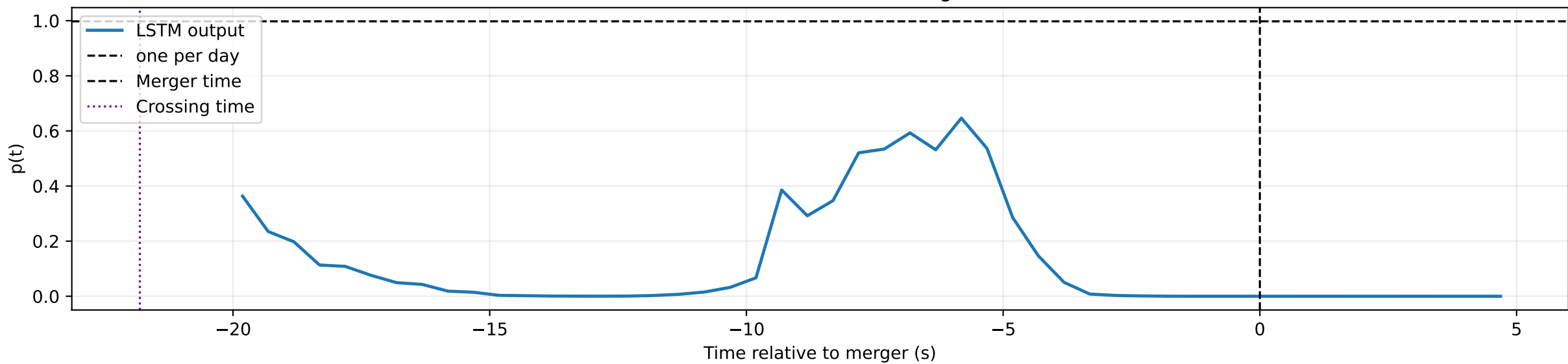
FULL FFT | peak=11.61 Hz | centroid=20.93 Hz | power[56,64]=0.00497



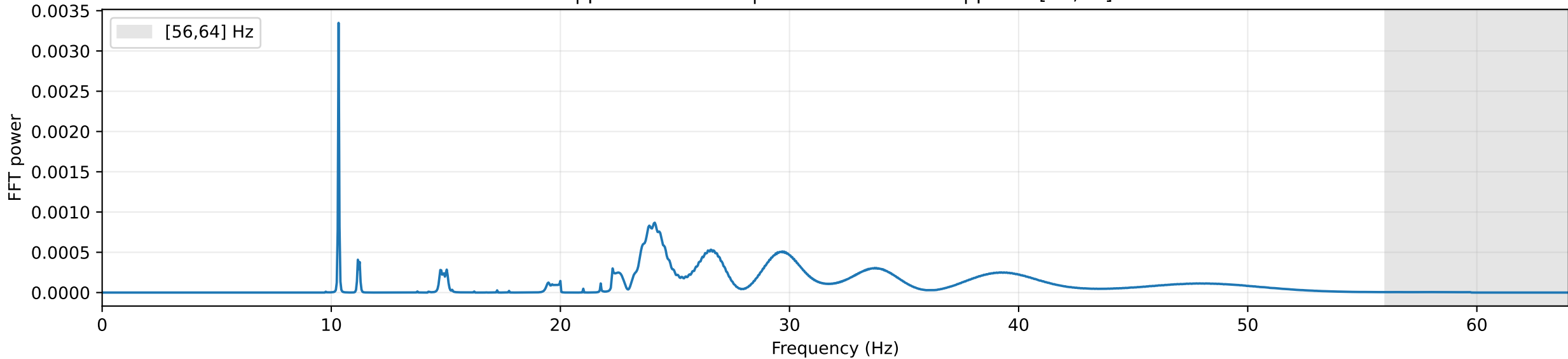
NSBH | quoted total SNR=9.70 | in-band pre-merger SNR=0.00 | dt\_before\_merger=21.81s | GPS=1263599616



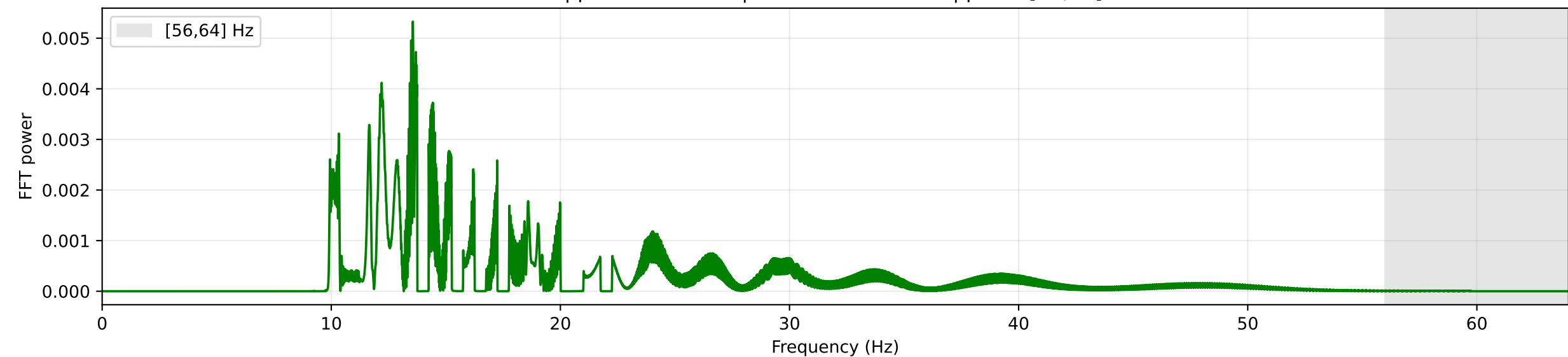
LSTM behaviour relative to merger time



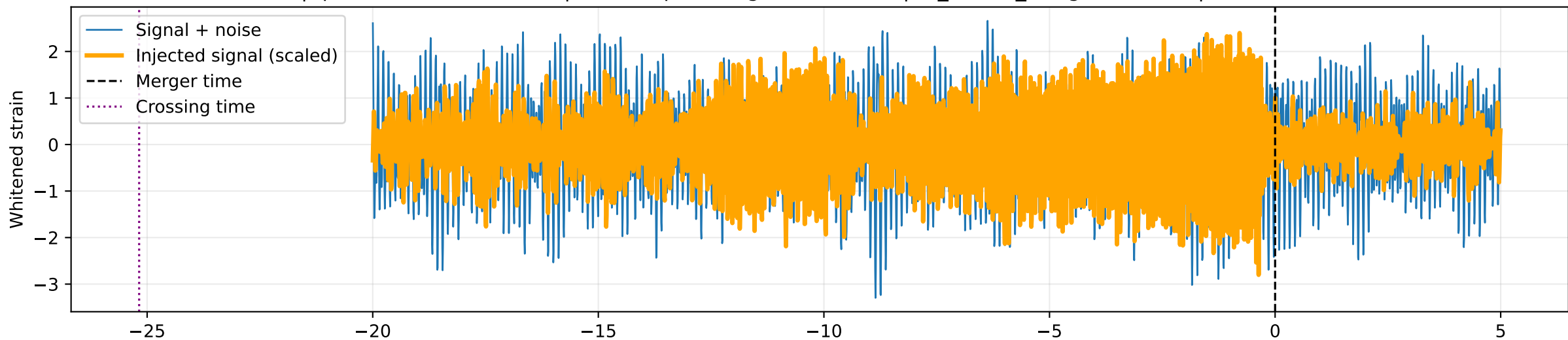
SHORT FFT | peak=10.32 Hz | centroid=31.27 Hz | power[56,64]=0.00316



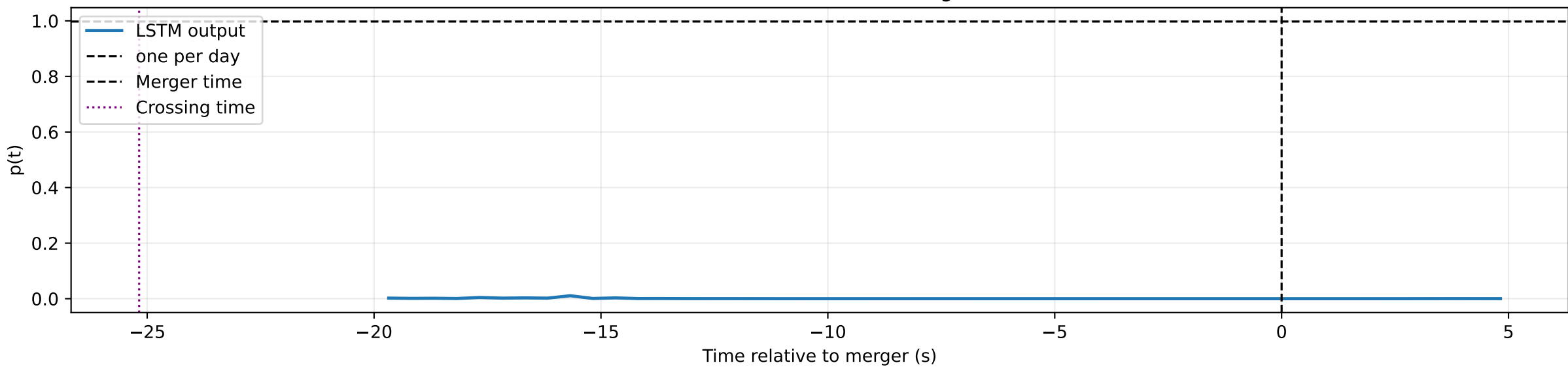
FULL FFT | peak=13.56 Hz | centroid=21.33 Hz | power[56,64]=0.00150



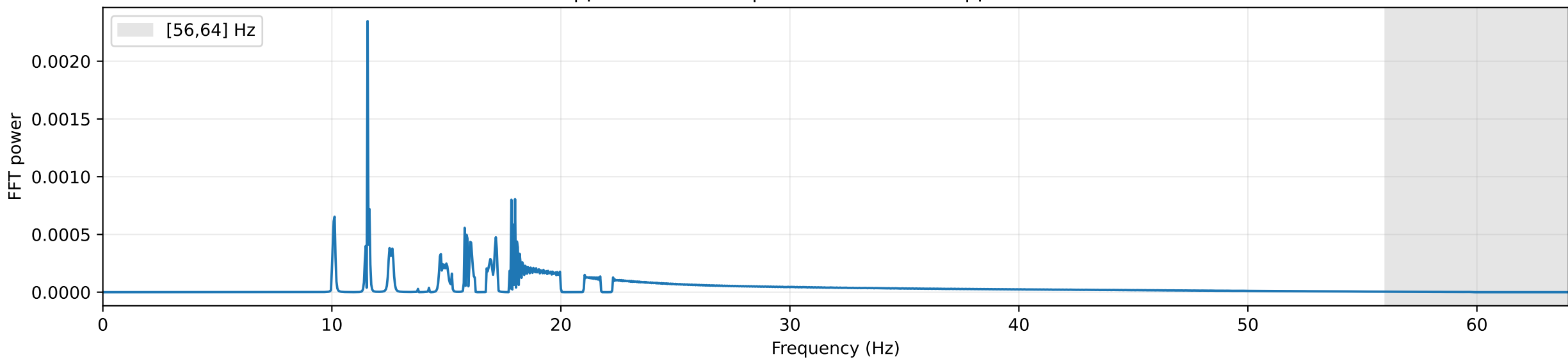
NSBH | quoted total SNR=4.14 | in-band pre-merger SNR=0.00 | dt\_before\_merger=25.18s | GPS=1263341568



LSTM behaviour relative to merger time



SHORT FFT | peak=11.56 Hz | centroid=23.48 Hz | power[56,64]=0.00437



FULL FFT | peak=11.56 Hz | centroid=20.52 Hz | power[56,64]=0.00533

