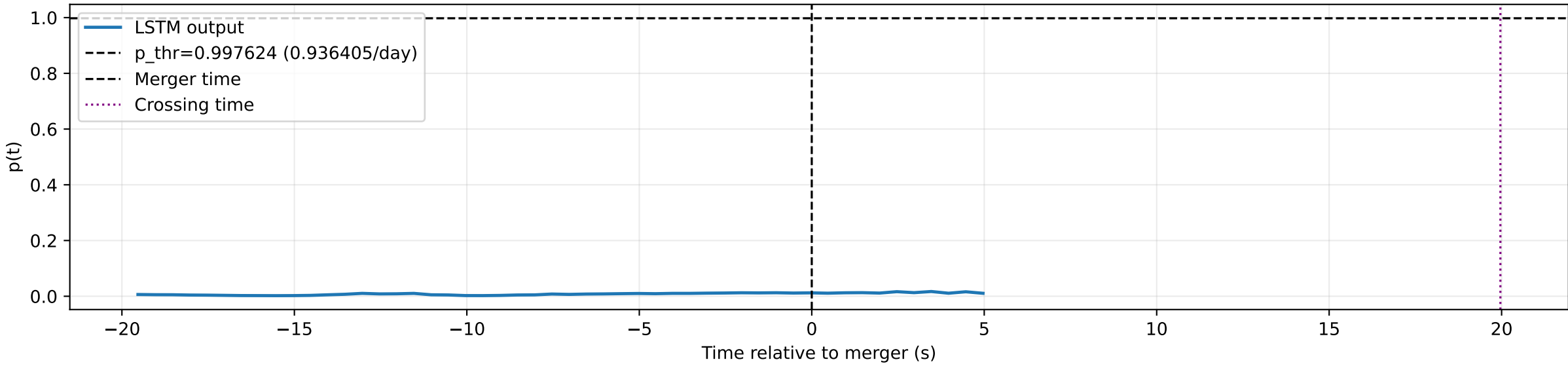
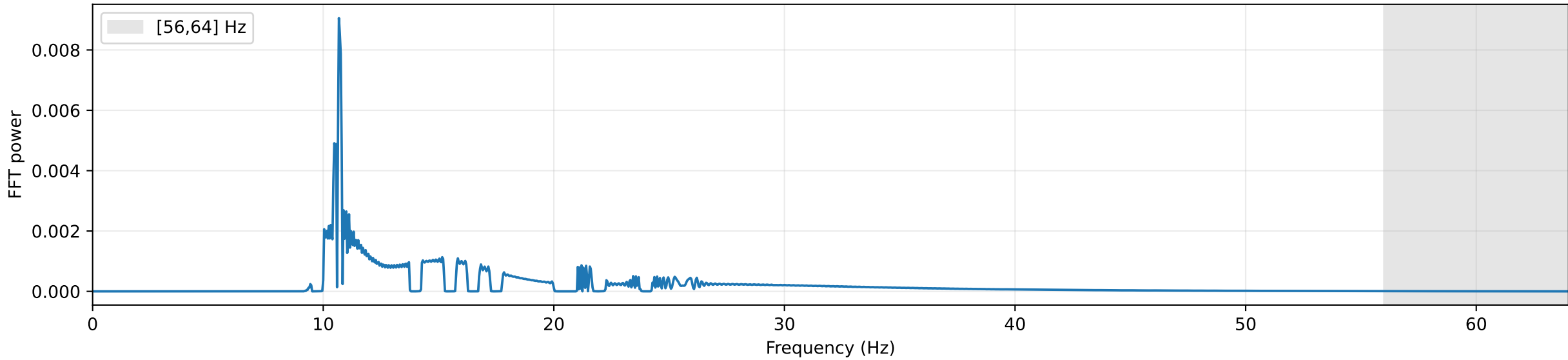


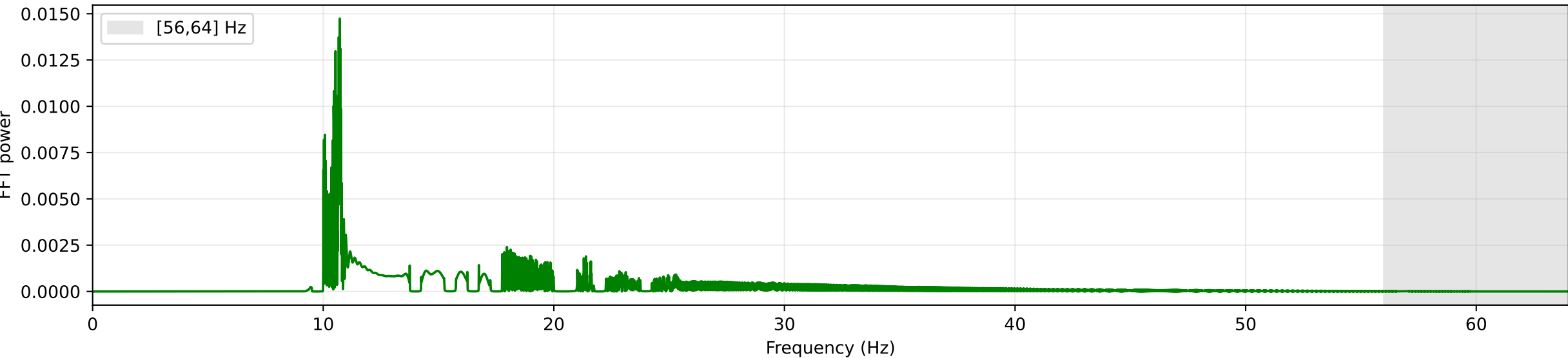
LSTM behaviour relative to merger time

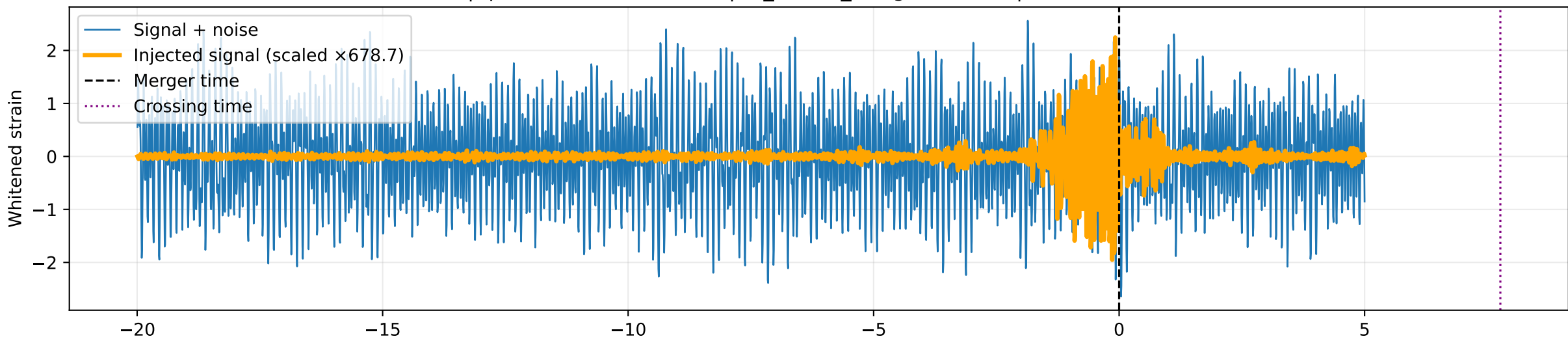


SHORT FFT | peak=10.68 Hz | centroid=18.14 Hz | power[56,64]=0.00140

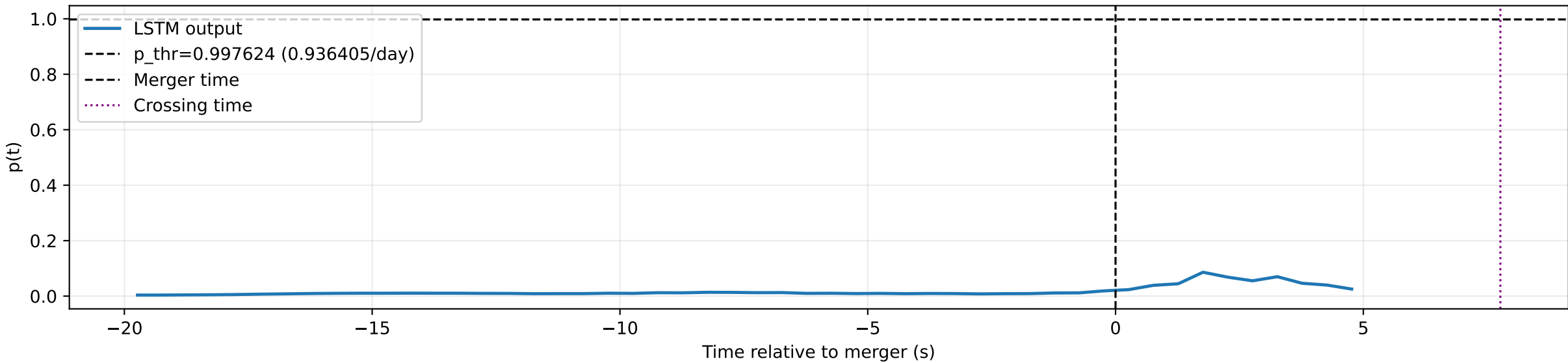


FULL FFT | peak=10.72 Hz | centroid=18.81 Hz | power[56,64]=0.00177

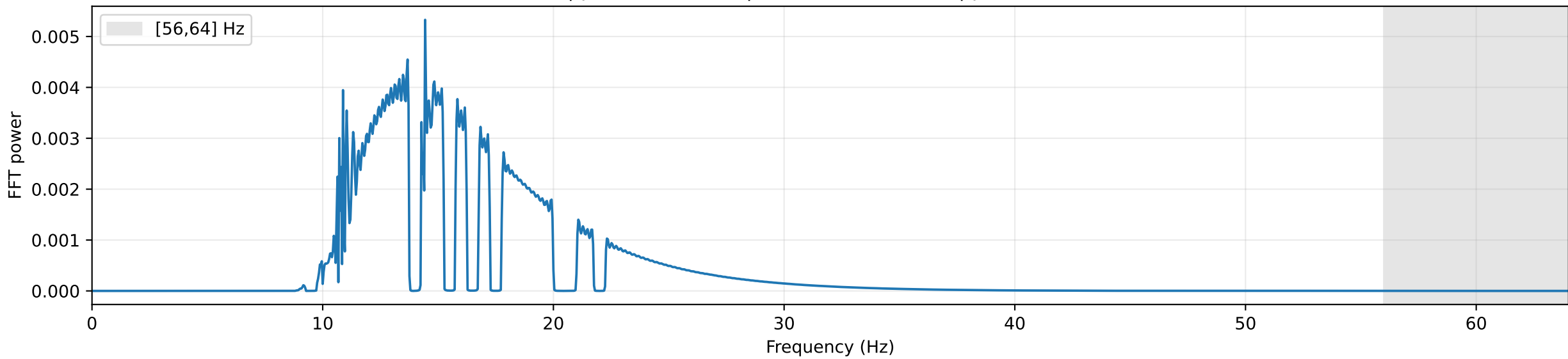




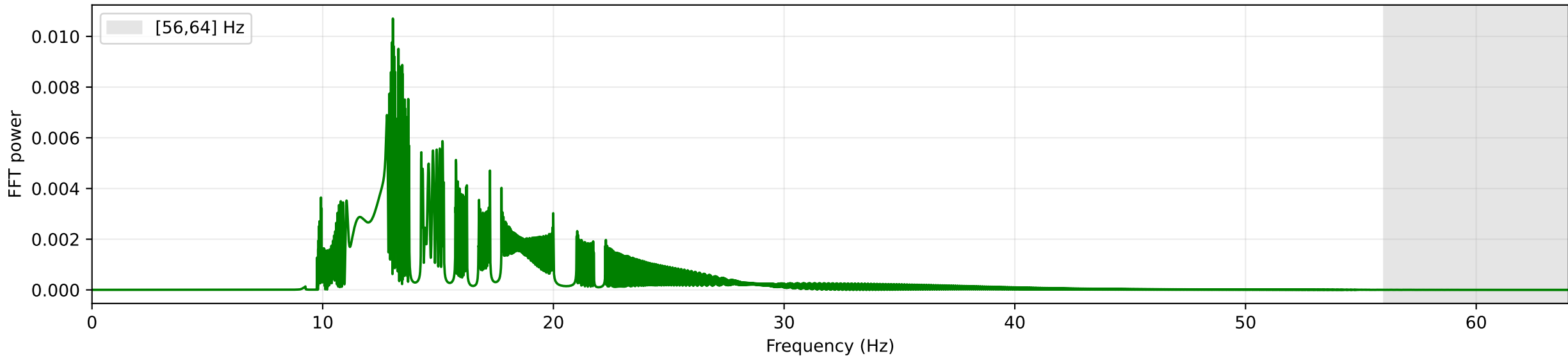
LSTM behaviour relative to merger time

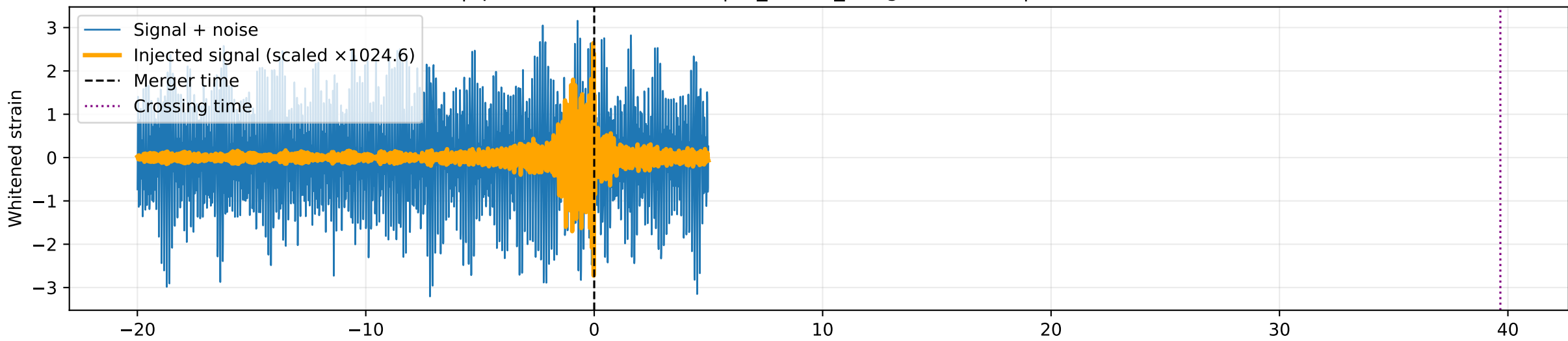


SHORT FFT | peak=14.44 Hz | centroid=16.64 Hz | power[56,64]=0.00020

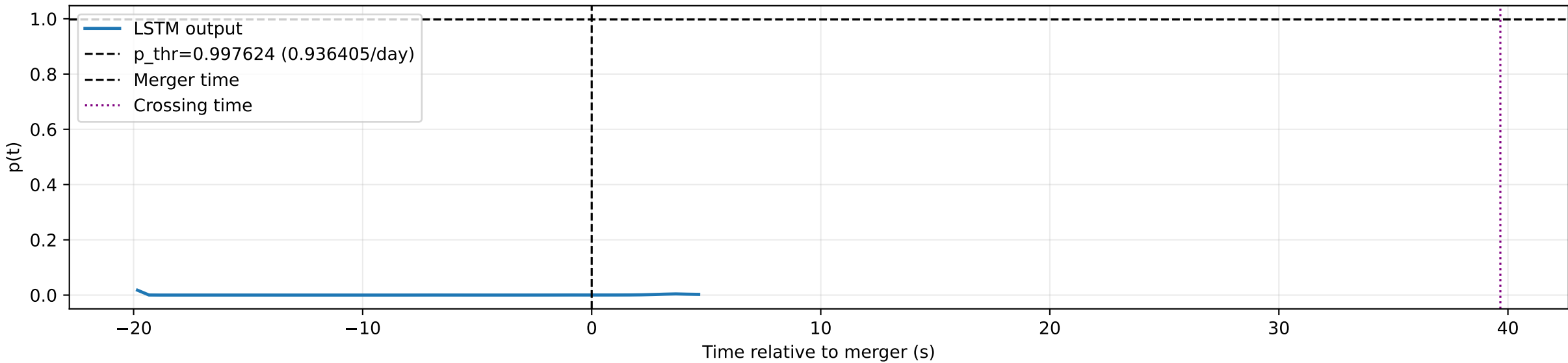


FULL FFT | peak=13.04 Hz | centroid=17.19 Hz | power[56,64]=0.00020

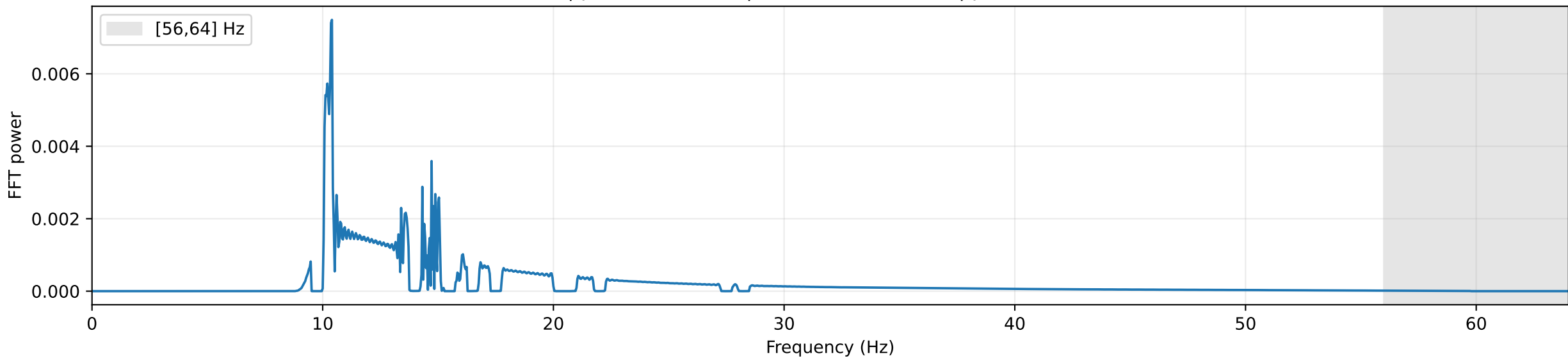




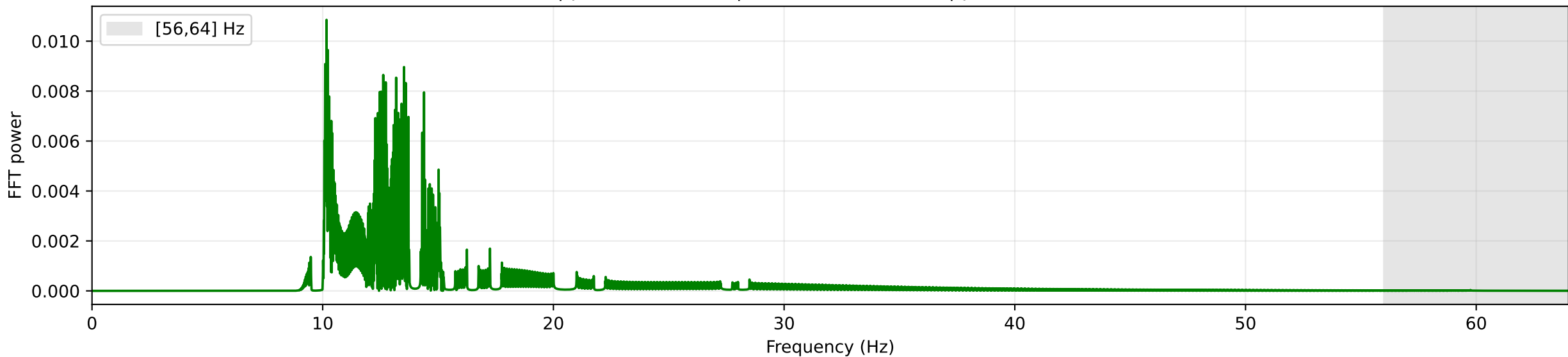
LSTM behaviour relative to merger time

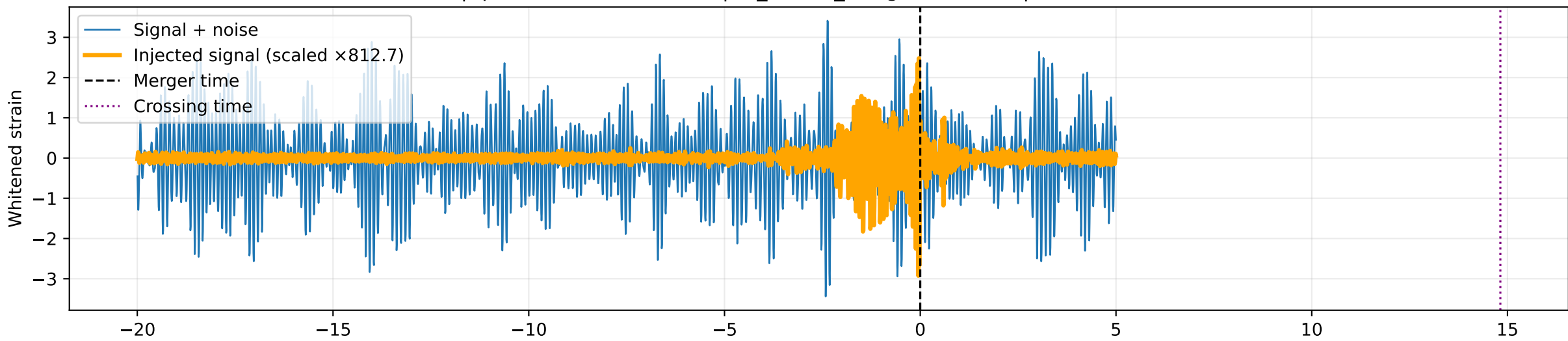


SHORT FFT | peak=10.40 Hz | centroid=17.44 Hz | power[56,64]=0.00252

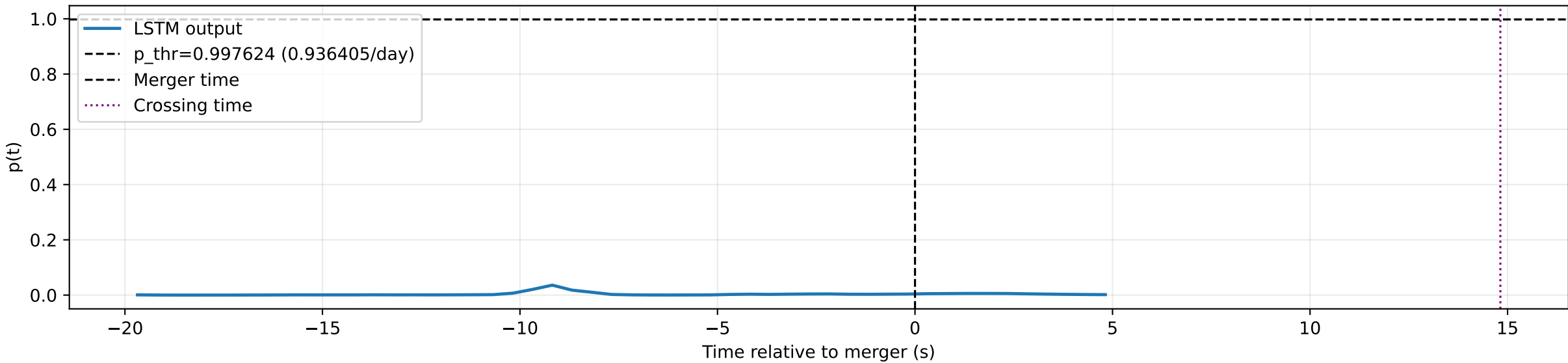


FULL FFT | peak=10.17 Hz | centroid=16.76 Hz | power[56,64]=0.00436

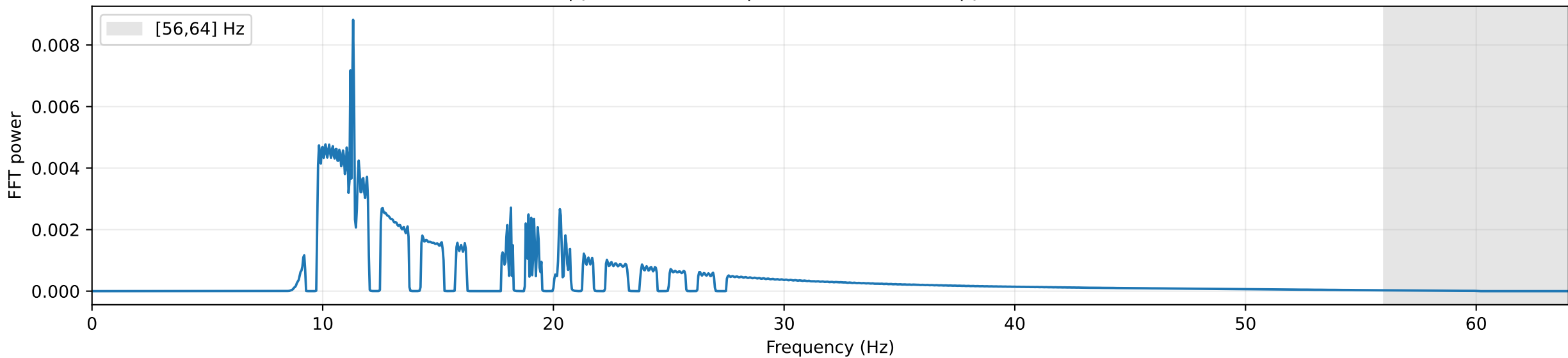




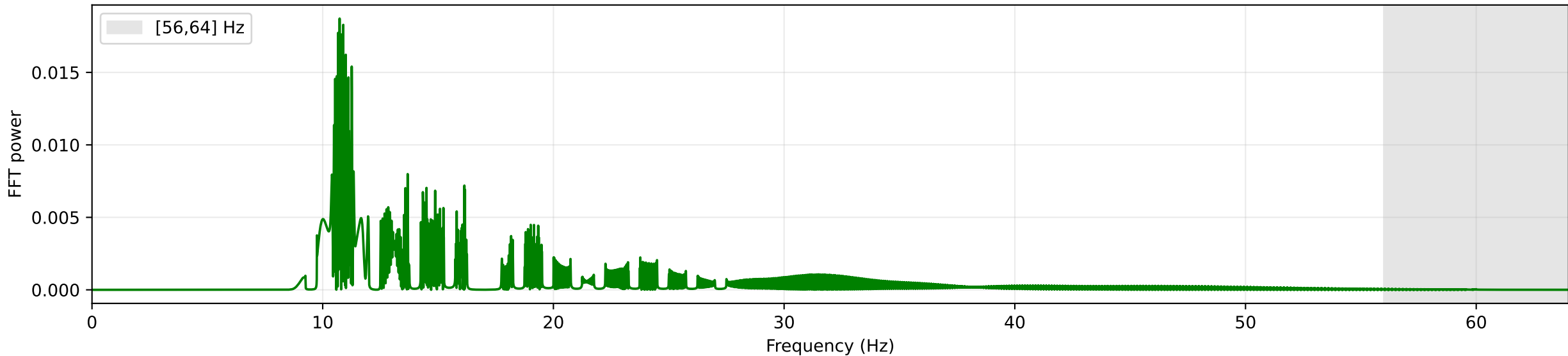
LSTM behaviour relative to merger time

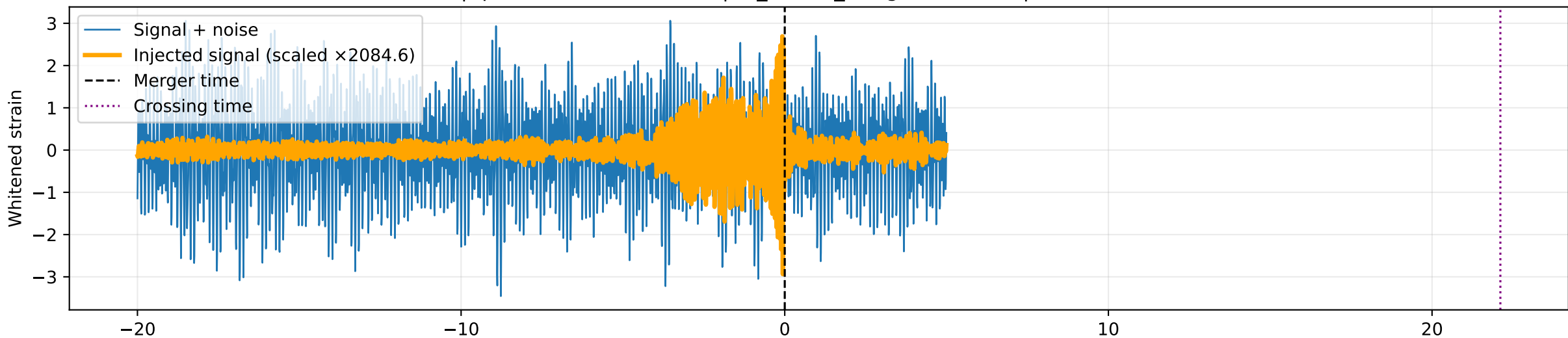


SHORT FFT | peak=11.32 Hz | centroid=18.62 Hz | power[56,64]=0.00276

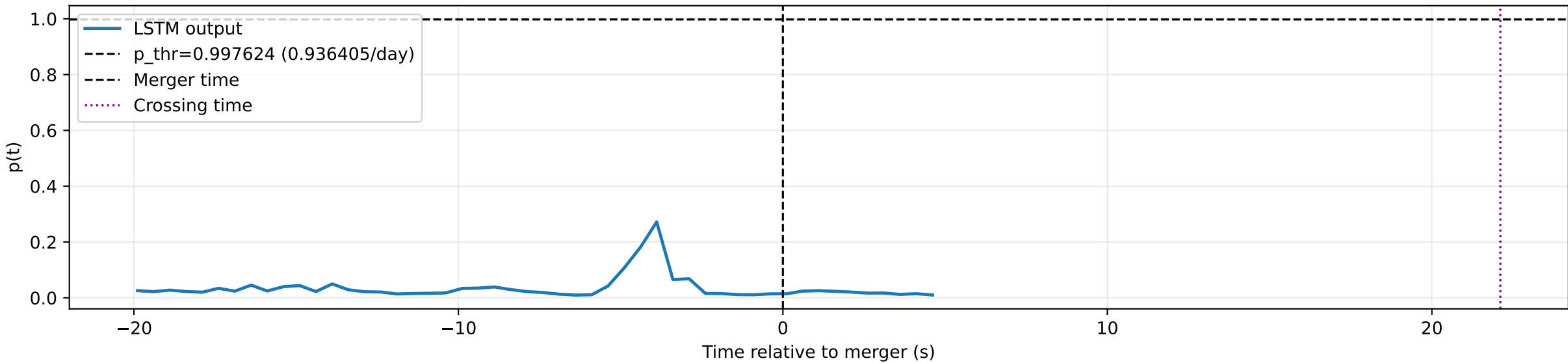


FULL FFT | peak=10.73 Hz | centroid=18.96 Hz | power[56,64]=0.00367

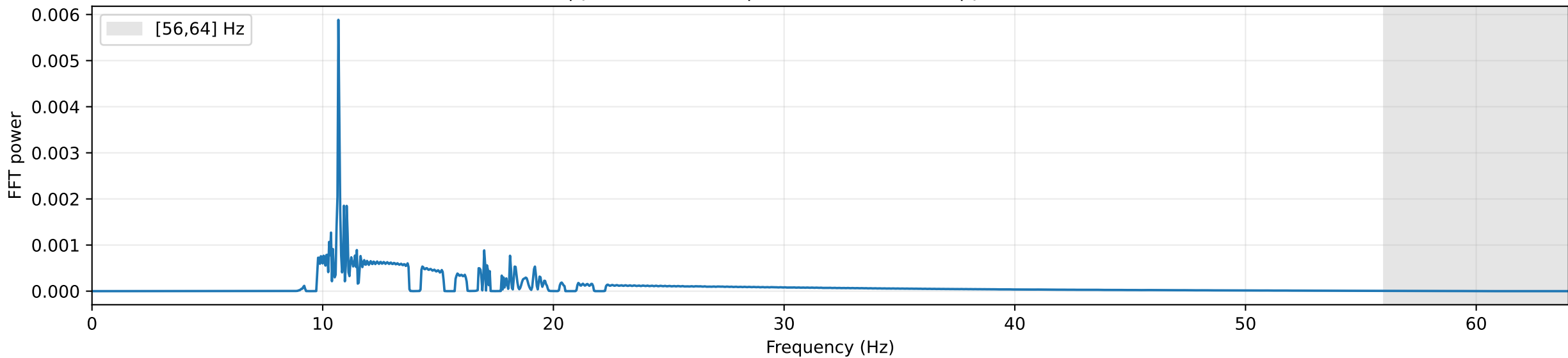




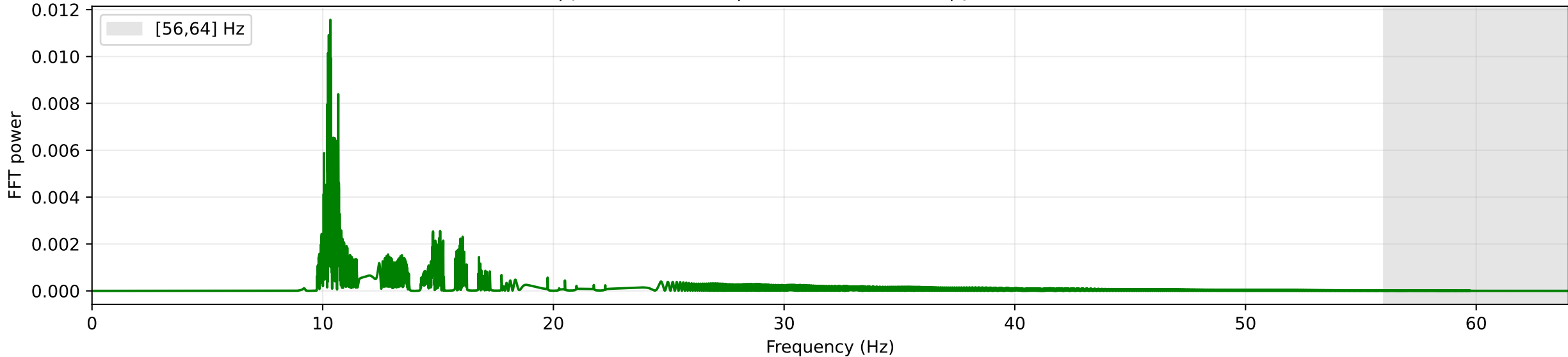
LSTM behaviour relative to merger time

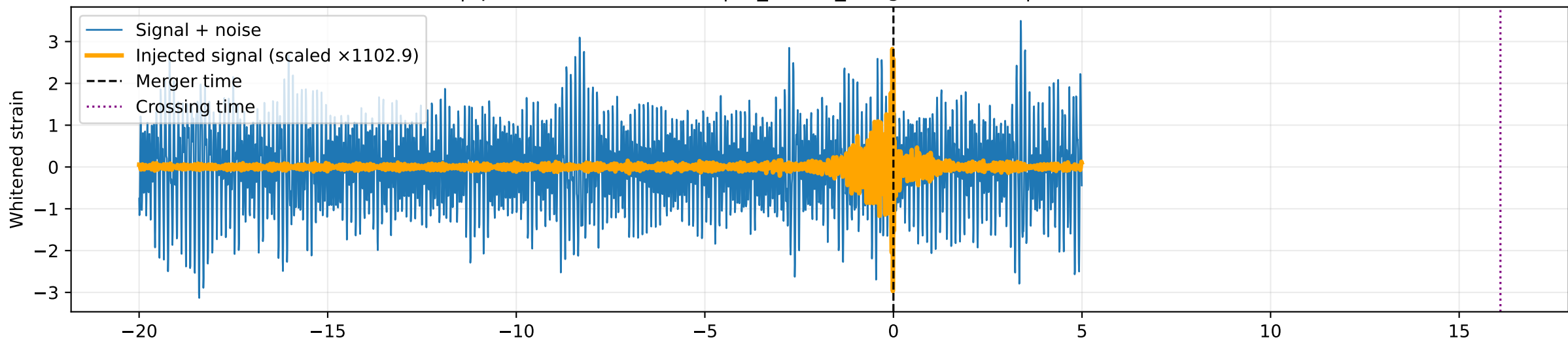


SHORT FFT | peak=10.68 Hz | centroid=18.65 Hz | power[56,64]=0.00242

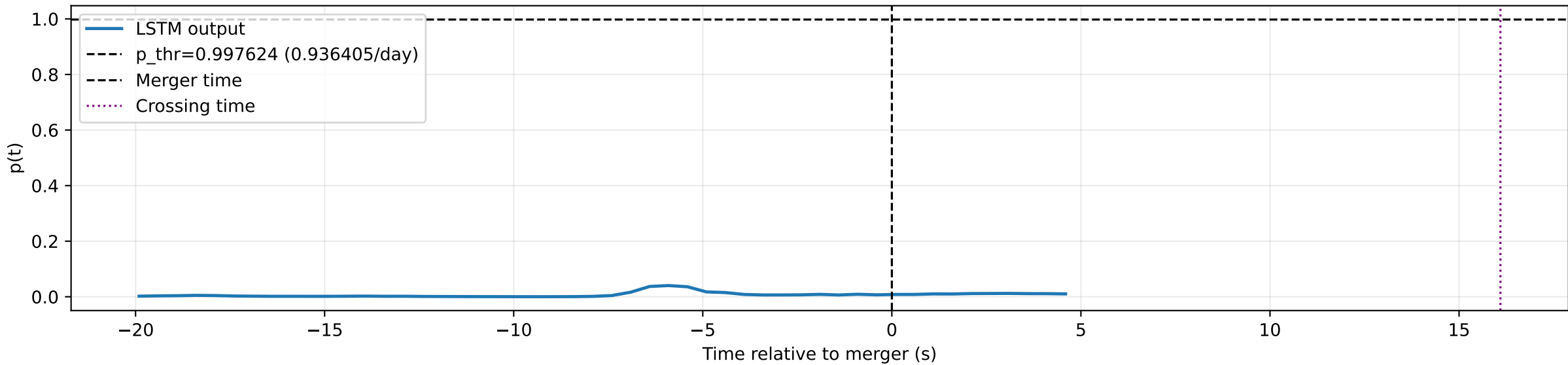


FULL FFT | peak=10.33 Hz | centroid=18.37 Hz | power[56,64]=0.00357

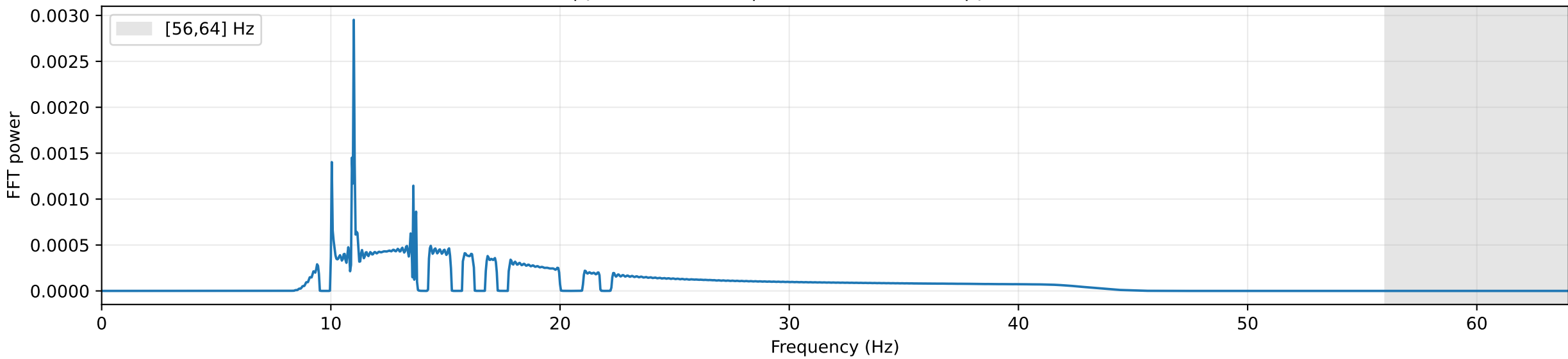




LSTM behaviour relative to merger time



SHORT FFT | peak=11.00 Hz | centroid=20.38 Hz | power[56,64]=0.00000



FULL FFT | peak=10.81 Hz | centroid=22.93 Hz | power[56,64]=0.00451

